

# INTRODUCTION

Discover a warm and welcome at the Niranjana Hotel, Bodhgaya which is moments from the archaeological Museum and 300 meters away from the historical Mahabodhi Temple. We look forward to welcoming you to Niranjana hotel soon.

Boasting 68 bright and spacious bedrooms with 5 different category of room time.

on-site Sujata restaurant, a gift shop(separate entity) free parking on site and complimentary WIFI, laundry services, housekeeping everyday. 24-hour front desk , rooftop access for leisure time, Wake-Up call.

Our Sujata restaurant with a seating capacity of 160 people is the perfect place to eat and relax. Our bedrooms feature 32'' LED TV with satellite cable, digital locker in wardrobe of every room, Iron & Ironing board, Yoga mat, Oil-heater(some room) and heater(on request), minibar etc.

# RECEPTION

Lobby Area



★ ★ ★  
**Niranjana**  
**Hotel**

# HOTEL GENERAL INFORMATION

---

## Hotel General Information

Niranjana Hotel management will highly appreciate your Cooperation & collaboration in abiding by these rules and regulations, whose aim is to ensure to provide peaceful, comfortable and safe stay for our Guests.

A hotel day starts at 2:00 p.m. on the day of arrival and ends at 12:00 a.m. of the following day.

Check-In: 2:00 P.M. Check-Out: 11:00 A.M.

Early Check-In: 2000 INR (Subject to availability)

Late Check-Out: 2500 INR till 2 P.M. After 2 P.M. Guests will be charged for the whole day on the rack rate.

Late Check-In- In case the guest fails to appear in the hotel by 10.00 P.M. of the accommodation day despite making a reservation, the room will be released if no information is conveyed on the day of check-In. To avoid late check-in price we request every guest to appear in the hotel before 11.30. However, Hotel will not charge any late fee if the guests arrive before 12.00 A.M.

Prepayment: Hotel reserves the right to collect prepayment any time after reservation. If the guest request to pay at the Hotel then we will be happy to accept this request provided it's at the discretion of the hotel to accept or request payment on a particular date closer to check-in (based on no. of rooms booked)

Children older than 3 years are welcome.

Children aged 12 years and above are considered adults in this property.

# Services

---

The hotel renders the following services:

- A) Airport Shuttle (Chargeable)
- B) Currency Exchange
- C) Laundry Service
- D) Room cleaning (On guest request) in the guest absence or presence. We request every guest not to turn on the "DO NOT DISTURB" switch in case you have requested for room cleaning.
- E) Travel Desk
- F) Packed Food for the Group
- G) Hire taxi for long distance Journey
- H) Information concerning the guest's stay and travel
- I) wake-up call (on a specified time)
- J) Storage of luggage, the hotel may refuse to store luggage at times other than during the guest's stay at the hotel or if the belongings are not of a personal kind.
- K) Rooftop access for leisure time (Currently under maintenance but guest may access the rooftop for Yoga. Only part of a rooftop is accessible where around 35-50 people at once can do Yoga

## OUR ROOMS

WE HAVE 5 CATEGORY OF ROOM

TYPE:DELUXE, DELUXE

BALCONY, EXECUTIVE, PREMIUM CLASSIC AND  
PREMIUM CLASSIC WITH BALCONY

AMENITIES:

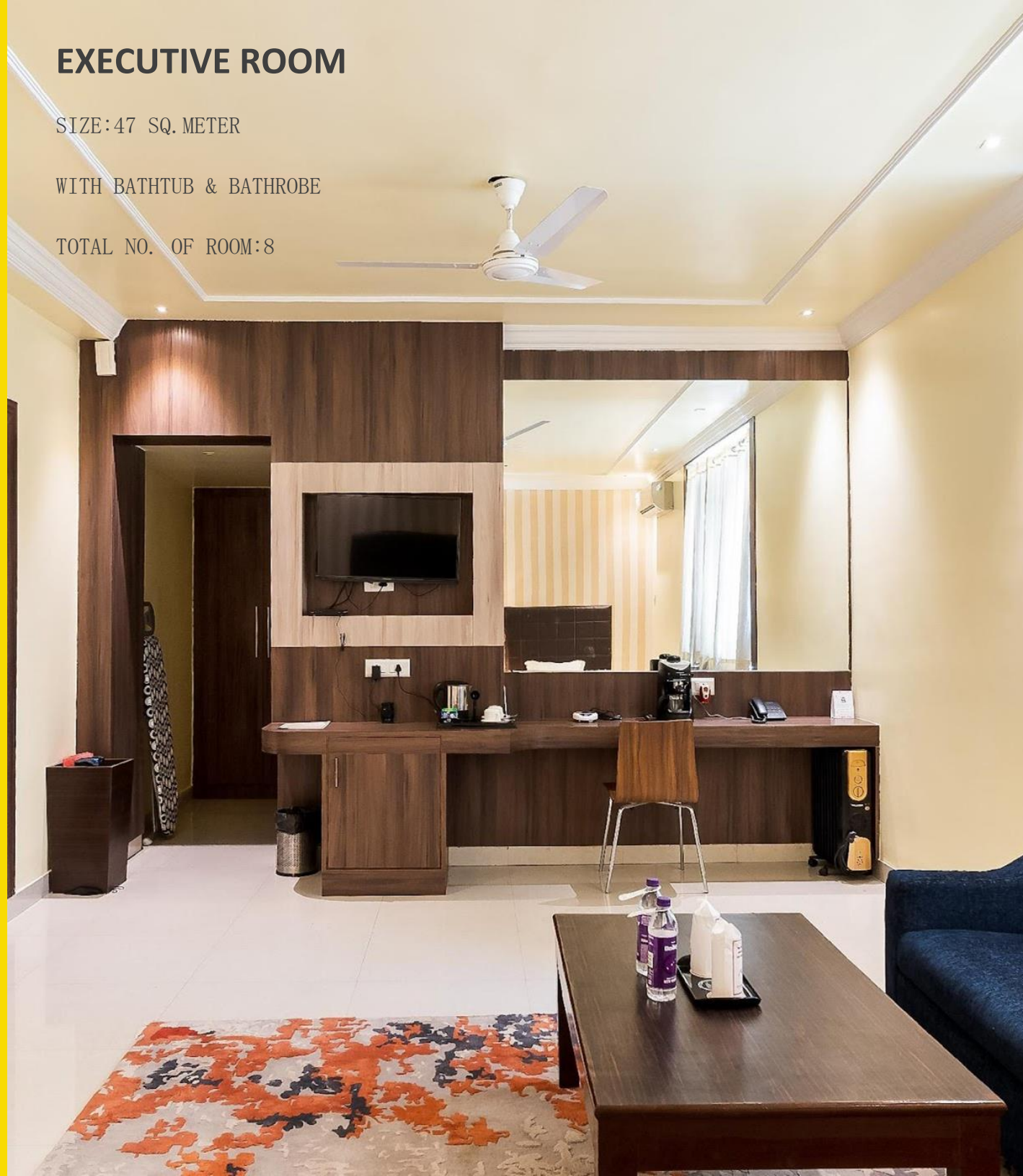
- Air Conditioning (Split A/C)
- Yoga Mat
- Minibar & Digital locker
- Coffee Maker & Tea making facilities
- kettle
- Spacious Modern Ensuite, Private Bathroom with Bathtub & free toiletries
- Hair Dryer
- Iron & Ironing board
- Tea & Coffee Hospitality Tray
- Wardrobe
- Slippers
- Room heater (on request)
- Snacks (based on room price)
- Telephone (Room & bathroom)
- Hair Straightener (based on availability)
- Two medium size sofa with a table
- A large mirror with a seating chair
- Big bed side carpet
- Laundry service [Chargeable, Guest need to fill up the laundry form slip (available the in wardrobe) and keep one copy of the slip with them before transferring their laundry baggage containing clothes.

## EXECUTIVE ROOM

SIZE:47 SQ. METER

WITH BATHTUB & BATHROBE

TOTAL NO. OF ROOM:8





## PREMIUM CLASSIC ROOM

SIZE:37 SQ.METER

BED TYPE:1 KING SIZE BED

WITH SHOWER HEAD & BIG LOUNGE SOFA

TOTAL NO. OF ROOM:6

## OVERLOOKING ARCHAEOLOGICAL MUSEUM

All the rooms are on the façade of the Building. The color and texture of the wall and its perfect room size sets us apart from other.

**The hotel renders services in accordance with its category and standard.**

### OTHER SERVICES

Parking Free private parking is possible on site (Prior reservation is needed)

Street parking

Accessible parking

Accessibility

Entire Building is accessible by wheelchair. For wheelchair prior reservation is needed (based on availability)

All 4 floors are accessible by elevator

Safety & Security

55 Security cameras are installed in common and outside areas of the property.

Fire extinguishers are installed and 24 hours security is provided.

Photocopy: Few pages will be copied free of cost.

## PREMIUM CLASSIC WITH BALCONY



## GREAT VIEW

ROOM SIZE: 34 SQ. METER

BED TYPE: 1 KING SIZE BED

WITH BALCONY AND SHOWER HEAD

ON 3<sup>RD</sup> FLOOR OF THE BUILDING (HIGH

FLOOR) COMES WITH AIR PURIFIER AND

BIG SOFA AND A GLASS TABLE

## DELUXE ROOM



ROOM SIZE: 26 SQUARE METER

BED TYPE: TWIN QUEEN SIZE BED

WE HAVE 50 DELUXE ROOM WHICH COMES  
WITH BATHTUB.

OTHER AMENITIES ARE YOGA MAT. COFFEE-  
MAKER, HEATER (ON REQUEST), IRON AND  
IRONING BOARD AND ,DIGITAL LOCKER

# SUJATA RESTAURANT

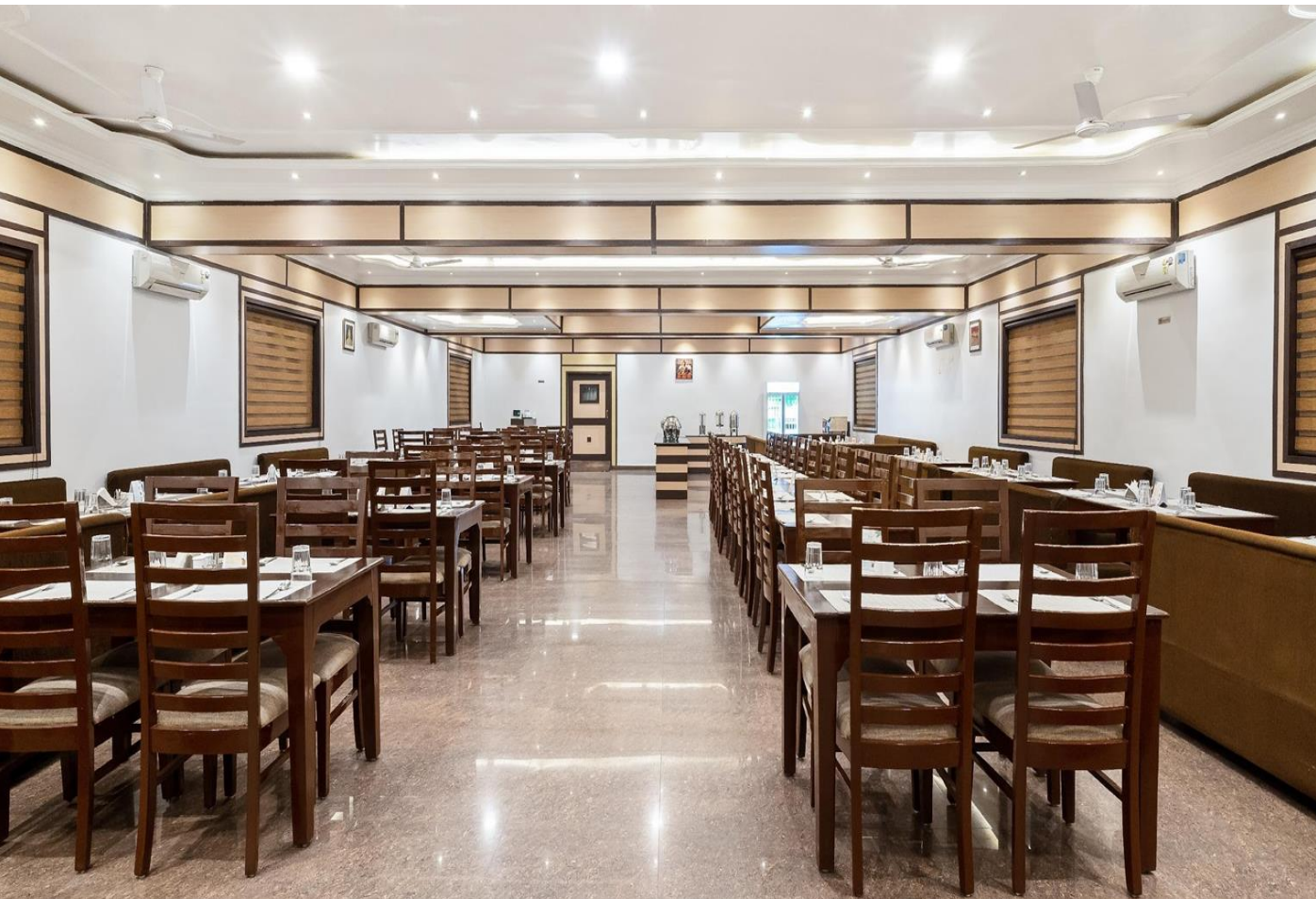
---

WE SERVE MORE THAN 500 FOOD ITEMS IN THE RESTAURANT WHERE 160 PEOPLE CAN SIT TOGETHER TO EAT AND RELAX. GUESTS MAY ORDER FOOD ONLINE (We do not provide food delivery service.

(Guest need to collect food by themselves)

TO CHECK MENU AND ORDER FOOD ONLINE,  
CLICK THE LINK BELOW:

<https://www.sujatarestaurant.com>



# ROOFTOP

---

A Part of a rooftop is accessible and around 35-50 people can sit together to practice yoga.

## ADDRESS:

Opp-Archaeological  
Museum,Bodhgaya,Gaya(Bihar)-  
824231

WEB:

- <https://www.hotelniranjana.com>

MAIL:

- [reservation@hotelniranjana.com](mailto:reservation@hotelniranjana.com)

- [niranjanahtl@gmail.com](mailto:niranjanahtl@gmail.com)

TEL:0631-2200475

PHONE:+91-8434060475

FOR RESERVATION:

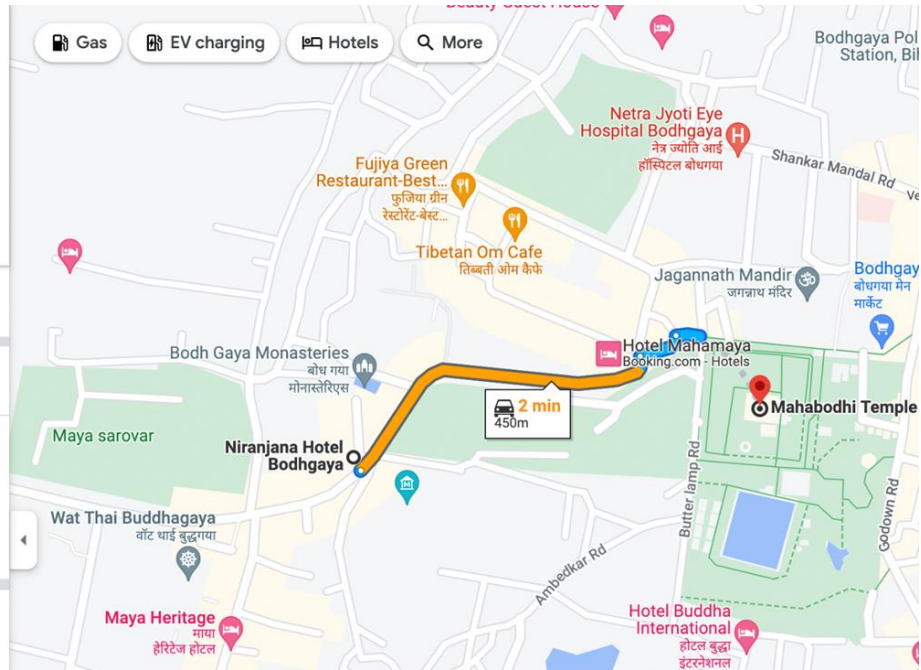
PHONE:+91-8292411195

# HOTEL MAP

☰ 🏠 🚗 🚝 🚶 🚲 ✈️ ✕

🕒 Leave now ⌵ Options

🚗 via Domuhan-Bodhgaya Rd 2 min  
 Fastest route now due to traffic conditions 450 m  
[Details](#)



## NEIGHBORHOOD

- ARCHAEOLOGICAL MUSEUM: 70 M
- CHINESE TEMPLE: 100 M
- JAI PRAKASH UDHAYAN 150 M
- WAT THAI: 200 M

## Hotel Map

**Niranjana Hotel-Mahabodhi Temple**

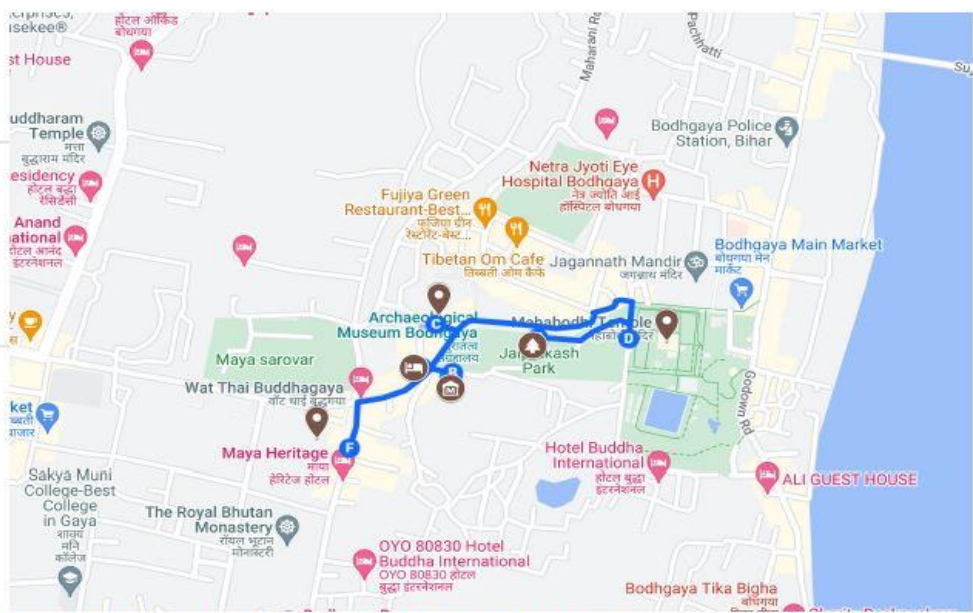
- Niranjana Hotel Bodhgaya
- Mahabodhi Temple

**Neighborhood**

- Archaeological Museum Bodhgaya
- Chinese Temple 中华大觉寺
- Jai Prakash Udhyan
- Wat Thai Buddhagaya

**Directions from Niranjana Hotel Bodhgaya to Wat Thai Buddhagaya**

- Niranjana Hotel Bodhgaya
- Archaeological Museum Bodhgaya
- Chinese Temple 中华大觉寺, Domuhan-Bodhgaya Road, Bodh Gaya, Bihar
- Jai Prakash Udhyan
- Mahabodhi Temple
- Wat Thai Buddhagaya

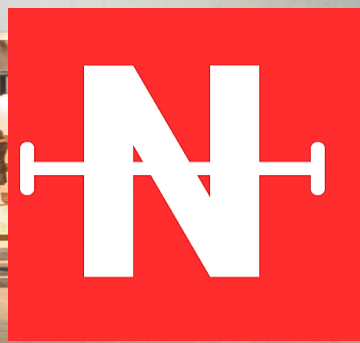


Distance from Hotel to Mahabodhi Temple (and its Neighborhood)

## DIRECTIONS FROM HOTEL TO MAHABODHI TEMPLE

Direction from hotel to Archaeological Museum, Chinese Temple, Jai Prakash Udhyan and Mahabodhi Temple





THANK YOU

@2022 BY Niranjana Hotel